

MIC 120 K-SPAN

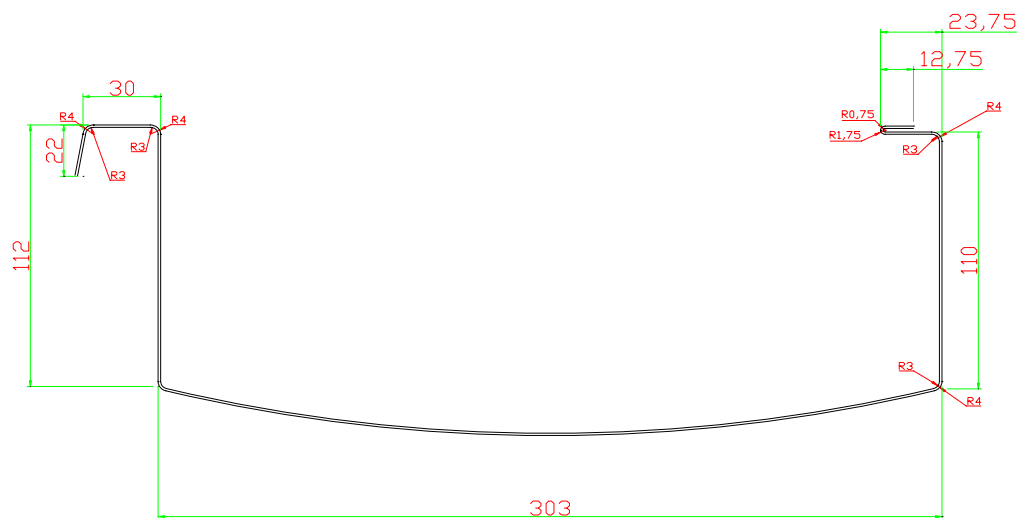
CURVING ROOF FORMING MACHINE

I Description of the machine

Large-span girderless vault making machine is comprised of decoiler, forming unit, hydraulic mould cutting device, electric control system, hydraulic system and unloading rack. All parts are mounted on a mobile pedestal. So it is suitable for site working.

II Features

- 2.1 Rollers are made of good steel, coated with rigid chrome.
- 2.2 There is an auto-feed device which can feed 0.8-1.5mm color steel sheets. During production, there is no need to adjust the gaps between rollers.
- 2.3 Adjustment of curving degree adopts handwheel and counter and thus makes easy operation and ensures quality and accuracy.
- 2.4 Light and convenient hoist, only 2kg (those from USA is 30kg). And thus makes quick and convenient installation.
- 2.5 Large span, high corrugation, high tension strength, nutless, etc.
- 2.6 Profile:



III Main technical data

- 3.1 Mounting dimension: 8900mm x 2250mm x 2500mm
- 3.2 Total weight: about 10500kg
- 3.3 Control system: electric control
- 3.4 Main forming unit driving motor power: 7.5kW
- 3.5 Curving motor power: 4+1.1+1.1 kW

- 3.6 Electric cutting motor power: 3kW
- 3.7 Material of rollers: 45# steel, quenched HRC 58-62
- 3.8 Material of roller shafts: 45# steel, adjusted
- 3.9 Material of cutting blade: Cr12
- 3.10 Step of rollers: 13 steps
- 3.11 Forming speed: 10000~12000 mm/min
- 3.12 Max span: 80m

IV Buildup and spares

- 1. Three decoilers for coils
- 2. Straight panel forming unit
- 3. Curving panel forming unit
- 4. Electric control system
- 5. Electric mould cutter
- 6. Two manual clamps (for clamping the beginning seam lock between two curved panels)
- 7. Small C channel bending machine
- 8. Lifting clamps, 8 sets
- 9. Lifting steeve, two pieces
- 10. Lock seaming machine, two pieces
- 11. Run-out racks for straight panel and curving panel: each 8 pcs enough for 24M span
- 12. Bearings for roller stands of straight panel forming mschine: two pieces
- 13. Driving chains: two pieces
- 14. Hand scissors: one piece (for cutting beginning terminal of color coils)
- 15. Hand clamps (for clamping curved panels to let seamer seam two panels together): 4 pieces
- 16. Wrench: one piece
- 17. Operation manual and CD

V Price:

Price basis: FOB Tianjin

Payment: 40% down payment by T/T in advance, the balance by irrevocable L/C at sight

Lead-time: within 60 days after receiving down payment

VI Guarantee: One year since the date of B/L

MIC 240 SUPER SPAN

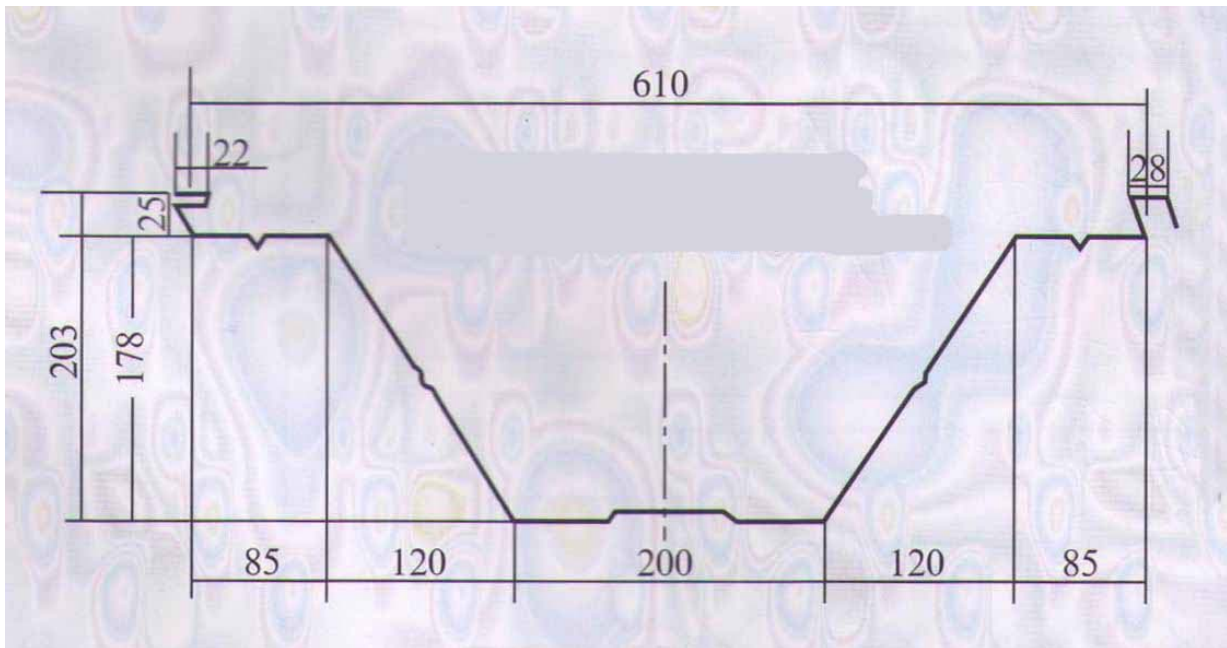
CURVING ROOF FORMING MACHINE

I Description of the machine

This super span MIC-240 machine is developed by ourselves with technology similar to ABM MIC-240 forming machine. It is comprised of mechanical expansion decoiler, straight panel forming unit, hydraulic mould cutting device, curving panel forming unit, control system, hydraulic system, run-out racks for straight and curve panels and all other accessories. All parts are installed on a mobile chassiss. So it is suitable for site working.

II Features

- 2.1 Rollers are made of good steel, coated with rigid chrome.
- 2.2 There is an auto-feed device which can feed 0.5-1.5mm color steel sheets. During production, there is no need to adjust the gaps between rollers.
- 2.3 Light and convenient hoist, only 2kg (those from USA is 30kg). And thus makes quick and convenient installation.
- 2.4 Large span, high corrugation, high tension strength, nutless, etc.
- 2.6 Profile:



III Main technical data

- 3.1 Mounting dimension: 8900mm x 2250mm x 2500mm
- 3.2 Total weight: about 11500kg
- 3.3 Control system: electric control
- 3.4 Main forming unit driving motor power: 7.5kW
- 3.5 Curving motor power: 4+1.1+1.1 kW

- 3.6 Electric cutting motor power: 3kW
- 3.7 Material of rollers: 45# steel, quenched HRC 58-62
- 3.8 Material of roller shafts: 45# steel, adjusted
- 3.9 Material of cutting blade: Cr12
- 3.10 Step of rollers: 13 steps
- 3.11 Forming speed: 10000~12000 mm/min
- 3.12 Max span: 120m

IV Buildup and spares

- 18. Three decoilers for coils
- 19. Straight panel forming unit
- 20. Curving panel forming unit
- 21. Electric control system
- 22. Electric mould cutter
- 23. Two manual clamps (for clamping the beginning seam lock between two curved panels)
- 24. Small C channel bending machine
- 25. Lifting clamps, 8 sets
- 26. Lifting steeve, two pieces
- 27. Lock seaming machine, two pieces
- 28. Run-out racks for straight panel and curving panel: each 8 pcs enough for 36m span
- 29. Bearings for roller stands of straight panel forming mschine: two pieces
- 30. Driving chains: two pieces
- 31. Hand scissors: one piece (for cutting beginning terminal of color coils)
- 32. Hand clamps (for clamping curved panels to let seamer seam two panels together): 4 pieces
- 33. Wrench: one piece
- 34. Operation manual and CD

V Price:

Price basis: FOB Tianjin

Payment: 40% down payment by T/T in advance, the balance by irrevocable L/C at sight

Lead-time: within 50 days after receiving down payment

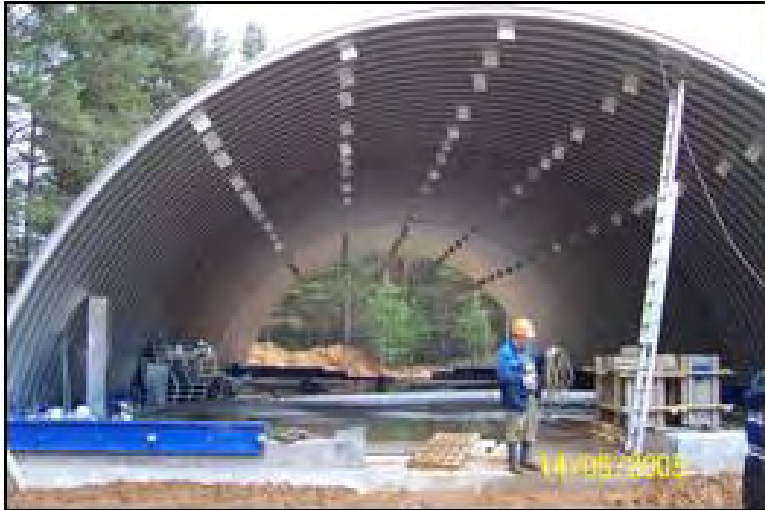
VI Guarantee: One year since the date of B/L

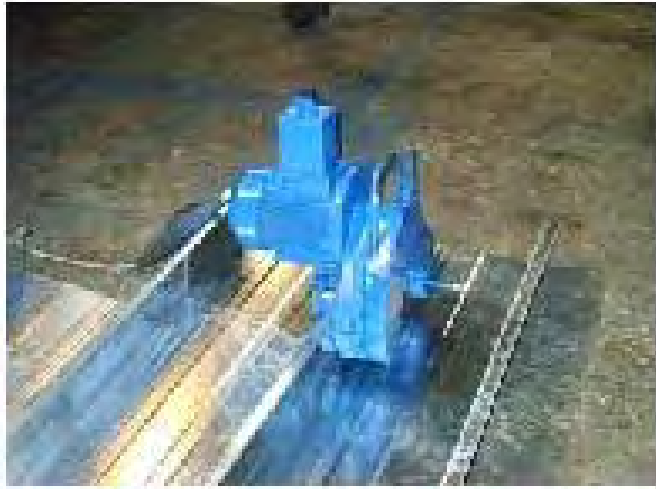


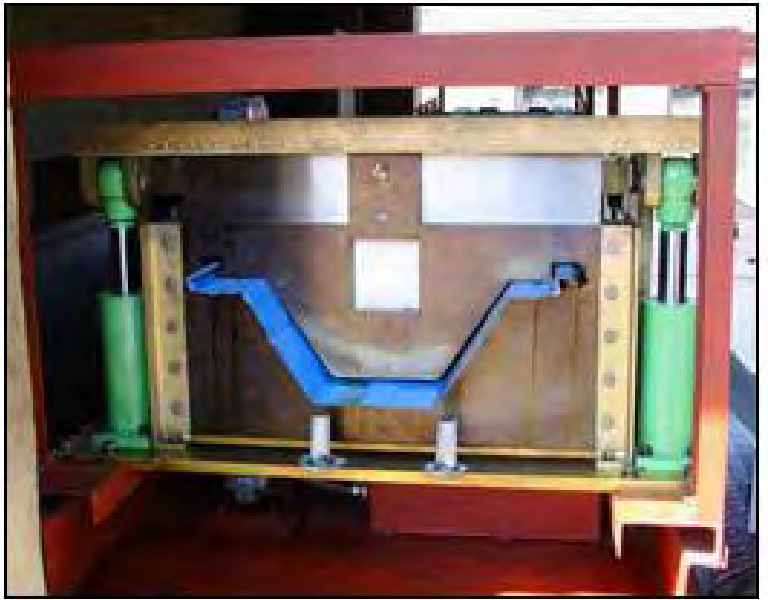


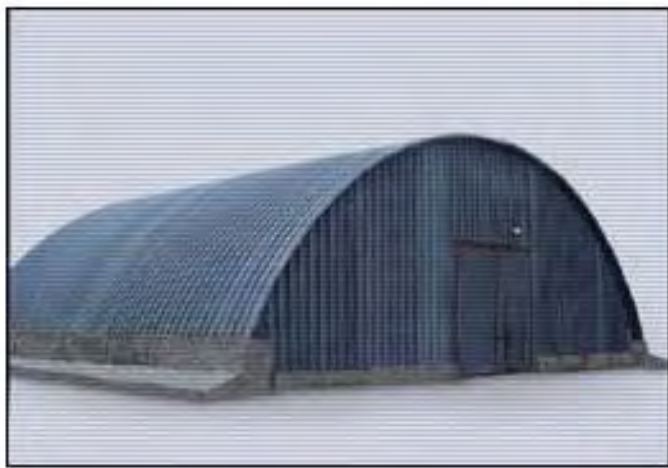






















彩板吊装就位



直槽板成型



弯槽板成型



地面分组咬口



分组吊装就位



屋面咬口



成型后的建筑物内景



成型后的建筑物外观















SX-GB-610型
拱板 槽深203

